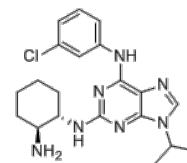


Product Name : SRI-29329
Cat. No. : PC-61027
CAS No. : 2086809-58-5
Molecular Formula : C₂₀H₂₆ClN₇
Molecular Weight : 399.927
Target : Cdc2-like Kinase (CLK)
Solubility : 10 mM in DMSO



Biological Activity

SRI-29329 (SRI29329) is a potent, specific **CDC-like kinase (CLK)** inhibitor with IC₅₀ of 78, 16 and 86 nM for CLK1, 2 and 4, respectively.

SRI-29329 shows no significant activity for CLK3, CDK1, CDK4 and CDK6 (IC₅₀>1,000 nM).

References

Shi Y, et al. *Bioorg Med Chem Lett*. 2017 Feb 1;27(3):406-412.

Caution: Product has not been fully validated for medical applications. Lab Use Only!

E-mail: tech@probechem.com